

**Appendix A**

Report to Council re. North Wales Population Assessment Regional Plan



CYDWEITHREDFA GWELLA GWASANAETHAU  
GOFAL A LLESIANT **GOGLEDD CYMRU**

**NORTH WALES** SOCIAL CARE AND WELL-BEING  
SERVICES IMPROVEMENT COLLABORATIVE

# North Wales population assessment regional plan 2018 to 2023

Draft version 0.11

Draft



This document is the joint area plan required by the Social Services and Well-being (Wales) 2014 Act and the Care and Support (Area Planning) (Wales) Regulations 2017.

### **Notes on the draft regional plan**

This is the final draft produced for discussion and approval by the six North Wales councils and Betsi Cadwaladr University Health Board.

Throughout the report there are sections highlighted in **blue** where links and appendices will need to be added before publication.

The report will be published in Welsh and English on 1 April 2018 at [www.northwalescollaborative.wales](http://www.northwalescollaborative.wales).

### **Contact us**

North Wales Social Care and Well-being Improvement Collaborative

County Hall, Wynnstay Road, Ruthin, LL15 1YN

Email: [sarah.bartlett@denbighshire.gov.uk](mailto:sarah.bartlett@denbighshire.gov.uk)

Phone: 01824 712432

[www.northwalescollaborative.wales](http://www.northwalescollaborative.wales)

# Contents

Introduction .....	4
Part A: Regional priorities.....	13
Part B: Response to population assessment chapters and core themes .....	18
Children and young people .....	19
Older people.....	24
Health, physical disability and sensory impairments .....	27
Learning disabilities.....	30
Mental health and substance misuse .....	32
Carers .....	35
Violence against women, domestic abuse and sexual violence .....	37
Secure estate .....	39
Veterans.....	41
Housing and homelessness .....	42
Autism Spectrum Disorder (ASD).....	43
Part C: Overall findings .....	44
Part D: For more information.....	49

## Introduction

This plan sets out how the Regional Partnership Board (RPB) will respond to the findings of the North Wales population assessment published on 1 April 2017.

The population assessment brings together information about people's care and support needs and the support needs of carers in North Wales. It aims to show how well people's needs are being met and the services we will need to meet them in future. Local authorities in North Wales worked together with Betsi Cadwaladr University Health Board (BCUHB) supported by Public Health Wales to produce the assessment, a requirement of the Social Services and Well-being (Wales) Act 2014.

We used all kinds of evidence to identify what's needed and asked people what they think is important including people who currently use care and support services, the North Wales citizen's panel, and staff who deliver services in the local authorities, health, private and voluntary sectors.

The assessment highlighted an increasing need for care and support, particularly to support complex needs and to make sure Welsh language services are available. It showed that public services need to work together, including local community groups and volunteers to support people earlier and prevent needs escalating where possible.

The full assessment is available online at: [www.northwalescollaborative.wales](http://www.northwalescollaborative.wales)

The main focus of this plan is on Regional Partnership Board priorities for integrated working between health and social care at a regional scale. Many of the findings of the population assessment are being addressed by partners as part of their core business or by existing partnerships between agencies across a variety of geographical boundaries. The plan briefly describes where this is taking place and links to further information. The population assessment and plan can be used to support other local and regional planning. When planning services we recommend going back to the relevant population assessment chapter and consultation reports for full details about what care and support is needed.

For information about services in your area please see [Part D: For more information](#).

## What the regional plan does

- The plan sets out high level principles, outcomes and priorities for **regional working** across health and social care in North Wales.
- It is a starting point for **formal** regional working under the Social Services and Well-being (Wales) Act 2014 and sets a framework for health and social care partners to work together to a common agenda.
- It focusses on priorities that have been highlighted by citizens.

## What the regional plan doesn't do

- It doesn't contain all health and social care priorities as the plan would be too large, instead it focusses on areas of work that require **partnership** working.
- It's not a huge collection of detailed actions lifted from partner's work plans as this would be duplication, instead the plan 'signposts' to other plans.

## Reviewing the population assessment

Preparing a single accessible population assessment across six counties and one health board area for the first time was a challenging process. There is plenty that we learnt from the process and more that needs to be done. We have produced a comprehensive feedback report which lists areas where further information is needed ([available on request](#)). These areas were considered when developing this plan and will also be looked at when we carry out the interim review of the population assessment during 2018-19.

We have also produced monthly newsletters about the population assessment. Each newsletter includes a summary of one of the chapters along with updates about the project and any developments or new initiatives related to the chapter. The newsletters are available here:

[www.northwalescollaborative.wales/?s=population+assessment+update](http://www.northwalescollaborative.wales/?s=population+assessment+update)

## How we developed the plan

The plan was developed by the Regional Partnership Board made up of the following members:

Name	Title
Llinos Medi Huws	Lead Member, Isle of Anglesey County Council
Morwena Edwards	Director, Gwynedd Council
Cllr Bobby Feeley	Lead Member, Denbighshire County Council
Caroline Turner	Director, Isle of Anglesey County Council
Cllr Christine Jones	Lead Member, Flintshire County Council
Clare Field	Director, Wrexham County Borough Council
Cllr Liz Roberts	Lead Member, Conwy County Borough Council
David Worrall	Third Sector Rep
Debbie Shaffer	Service User Rep
Jenny Williams	Director, Conwy County Borough Council
Cllr Joan Lowe	Lead Member, Wrexham County Borough Council
Lynda Colwell	Third Sector Rep
Margaret Hanson	BCUHB

Name	Title
Mary Wimbury	Provider Rep
Morag Olsen	Chief Operating Officer, BCUHB
Neil Ayling	Director, Flintshire County Council
Nicola Stubbins	Director, Denbighshire County Council
Richard Weigh	Chief Finance Officer (section 151) (Co-opted)
Vin West	Carer Rep
Wendy Jones	Third Sector Rep
Cllr William Gareth Roberts (Chair)	Lead Member, Gwynedd Council
Assistant Chief Constable Richard Debicki	North Wales Police (Co-opted)
Richard Fairhead	North Wales Fire and Rescue Service (Co-opted)
Andy Long	North Wales Ambulance Service (Co-opted)
Teresa Owen	Executive Director of Public Health, BCUHB (Co-opted)
Bethan Jones Edwards	Head of Regional Collaboration – Business Management Support

The plan is based on the consultation and engagement carried out as part of the population assessment. More information is available in [appendix 1](#) of the population assessment. Consultation and engagement is also being built into the scope and delivery plans prepared for each of the regional priorities.

We published a draft version and summary version of the regional plan on our website for consultation between 11 August and 17 November 2017. We promoted the link through regional networks, the voluntary sector councils, local authorities and health as well as through our monthly newsletters. The engagement group monitored responses and followed up the invite with under-represented groups. We arranged workshops with under-represented groups where possible. We made paper copies of the report and questionnaire available on request.

The purpose of consulting on an early version of the draft plan was to involve as many people as possible in writing and shaping the plan at an early stage in the project. We received 135 response to the consultation and the regional plan webpage was viewed around 1,800 times. We also received feedback from regional groups such as the Learning Disability Partnership and North Wales Armed Forces Forum.

Further consultation also took place during the approval process. The report has been reviewed by the Regional Partnership Board, the appropriate senior executive meetings, scrutiny and/or cabinet meetings in each local authority and the health board. For more information please see the consultation report [\[add link\]](#).

## Equality and human rights

The Equality Act 2010 introduced a public sector equality duty which requires all public bodies including the council to tackle discrimination, advance equality of opportunity and promote good relations. An equality impact assessment was undertaken to identify any potential inequalities arising from the development and delivery of this plan. We consulted with people with protected characteristics about the plan and the population assessment that informed it. More information is available in [appendix 1](#) of the population assessment and in the consultation report [\[add link\]](#) produced for this plan.

When developing services in response to the regional plan additional equalities impact assessments **must** be undertaken. Each chapter in the population assessment includes information about the issues that may affect people with protected characteristics and a summary is included in this plan. The summary of issues is far from comprehensive and is there to act as a prompt to consider the full range of issues. Additional information to inform these assessments is available in the consultation reports and the population assessment document library.

The Regional Partnership Board is committed to co-producing services with people who use them and their carers. The board recognises that carers are key partners in providing care throughout this plan.

All public sector partners represented on the Regional Partnership Board are required to publish [strategic equality plans](#) which set out their equality objectives and action plans. The regional plan supports the objectives set out in these plans and many of the actions will contribute to addressing inequalities in health and well-being.

Every effort has been made to use appropriate language to describe people with different needs and protected characteristics within the plan. We acknowledge that preferred terms change over time and that people may have different opinions about the language they prefer to describe themselves. The debate will be welcome and hopefully helps us towards a common understanding about the use of language.

The Human Rights Act 1998 sets out the basic rights we all have because we are human. They help protect people by giving public services, including health and social care services, a legal duty to treat people with fairness, equality, dignity, respect and autonomy. Services developed in response to this plan also need to be based on the UN Convention on the Rights of the Child (UNCRC) and the UN Principles for Older Persons (UNPOP).

## What works: using research evidence

We want services to be based on evidence of what works wherever possible. As part of the assessment, Public Health Wales carried out a review of the evidence available for early intervention and prevention services, which is available here: [www.publichealthwalesobservatory.wales.nhs.uk](http://www.publichealthwalesobservatory.wales.nhs.uk)

More information about the evidence base for services is available from the UK What Works centres in social policy. Links to the centres and guidance on how to use research evidence in practice are available here: [www.alliance4usefulevidence.org](http://www.alliance4usefulevidence.org)

## How will we know we've made a difference?

We will monitor and evaluate progress against this plan through the annual Regional Partnership Board report. More information about how we will monitor progress around each integrated priority is available in the [scope and delivery plans](#).

Each of the regional priorities identified in this plan contribute to the outcomes set in the [National Outcomes Framework](#) for people who need care and support, which we will use as a framework for measuring outcomes.

## Governance

The Regional Partnership Board have agreed the Delivering Transformation Regional Structure shown in [figure 1](#) below.

### Regional Partnership Board

This North Wales Regional Partnership Board was established to meet Part 9 of the Social Services and Well-being (Wales) Act 2014. See membership [above](#).

The guiding principles<sup>1</sup> of the Regional Partnership Board are that we are committed to the delivery of sustainable and improved health and well-being for all people in North Wales. This means:

- 1 Whole system change and reinvestment of resources to a preventative model that promotes good health and well-being and draws effectively on evidence of what works best
- 2 Care is delivered in joined up ways centred around the needs, preferences and social assets of people (service users, carers and communities)
- 3 People are enabled to use their confidence and skills to live independently, supported by a range of high quality, community based options

---

<sup>1</sup> Principles were developed at the board workshop on 10 November 2016



- 4 Embedding co-production in decision making so that citizens and their communities shape services
- 5 We recognise the broad range of factors that influence health and well-being and the importance of the links to these areas (including education, housing, welfare, reduced homelessness, economic growth, regeneration, leisure and the environment)

The Regional Partnership Board's priorities are based on the principles of the Social Services and Well-being (Wales) Act 2014:

- The act supports people who have care and support needs to achieve well-being.
- People are at the heart of the new system by giving them an equal say in the support they receive
- Partnership and co-operation drives service delivery
- Services will promote the prevention of escalating need and the right help is available at the right time

The board is committed to strengthening Welsh language services and providing an active offer through the [Mwy na geiriau/More than just words](#) framework.

More information about the act is available at the Social Care Wales [Information and Learning Hub](#) and more information about the board is available on our [website](#).

### **North Wales Regional Leadership Board**

The Regional Partnership Board reports to the Regional Leadership Board which includes:

- The Council Leaders and Chief Executives of the six local authorities
- The Chair and Chief Executive of the Betsi Cadwaladr University Health Board (BCUHB)
- The Chief Constable of the North Wales Police
- The Chair and Chief Fire Officer of the North Wales Fire and Rescue Authority.

The Regional Leadership Board aims to provide strategic leadership by strengthening relationships across public services in North Wales.

### **Addressing other report findings**

Governance will be through each organisation's own structures and Partnership Friday, a series of regional meetings that take place once a month including:

- North Wales Social Services and Well-being Improvement Collaborative (Directors of Social Services)

- Regional Leadership Group (Directors of Social Services and the Area Directors from BCUHB)
- North Wales Heads of Children's Services (NWHoCs)
- North Wales Adults Service Heads (NASH)

In addition the North Wales Safeguarding Board (NWSB) including the North Wales Safeguarding Children's Board (NWSAB) and North Wales Safeguarding Adults' Boards (NWSAB) provide governance of some elements of the plan.

## Links with other regional governance structures

### Public Services Boards and Well-being Plans

There are four Public Services Boards (PSBs) in North Wales established by the Well-being of Future Generations (Wales) Act 2015. The purpose of the PSBs is to improve the economic, social, environmental and cultural well-being in their area by strengthening joint working across all public services in North Wales. Each PSB prepared a well-being assessment in parallel with the population assessment and is preparing a well-being plan in parallel with this regional plan. More information is available on the PSB websites.

[Gwynedd and Anglesey Public Services Board](#)

[Conwy and Denbighshire Public Services Board](#)

[Flintshire Public Services Board](#)

[Wrexham Public Services Board](#)

The Well-being of Future Generations (Wales) Act 2015 requires us to think about the long-term impact of our decisions, work better with people, communities and each other and to prevent persistent problems such as poverty, health inequalities and climate change. We have carried out a well-being impact assessment [\[add link\]](#) on this plan as part of this duty.

The governance structure needs to consider overlaps with Public Services Board priorities and how these will be managed. Where issues can be resolved locally by partners this will be through the PSBs and health and social care issues that require a regional solution will be brought to the Regional Partnership Board.

## Resources

The plan will be delivered using resources from all partners including core budgets from BCUHB and local authority social services departments and additional grant funding for specific projects. More information about the resources required is included in the scope and delivery plans for each of the regional priorities.

To deliver the broad aims of the plan we will need to make the best use of the resources we have - not just health and social care budgets but local businesses, charities, community organisations, families and friends.

### **Integrated Care Fund (ICF)**

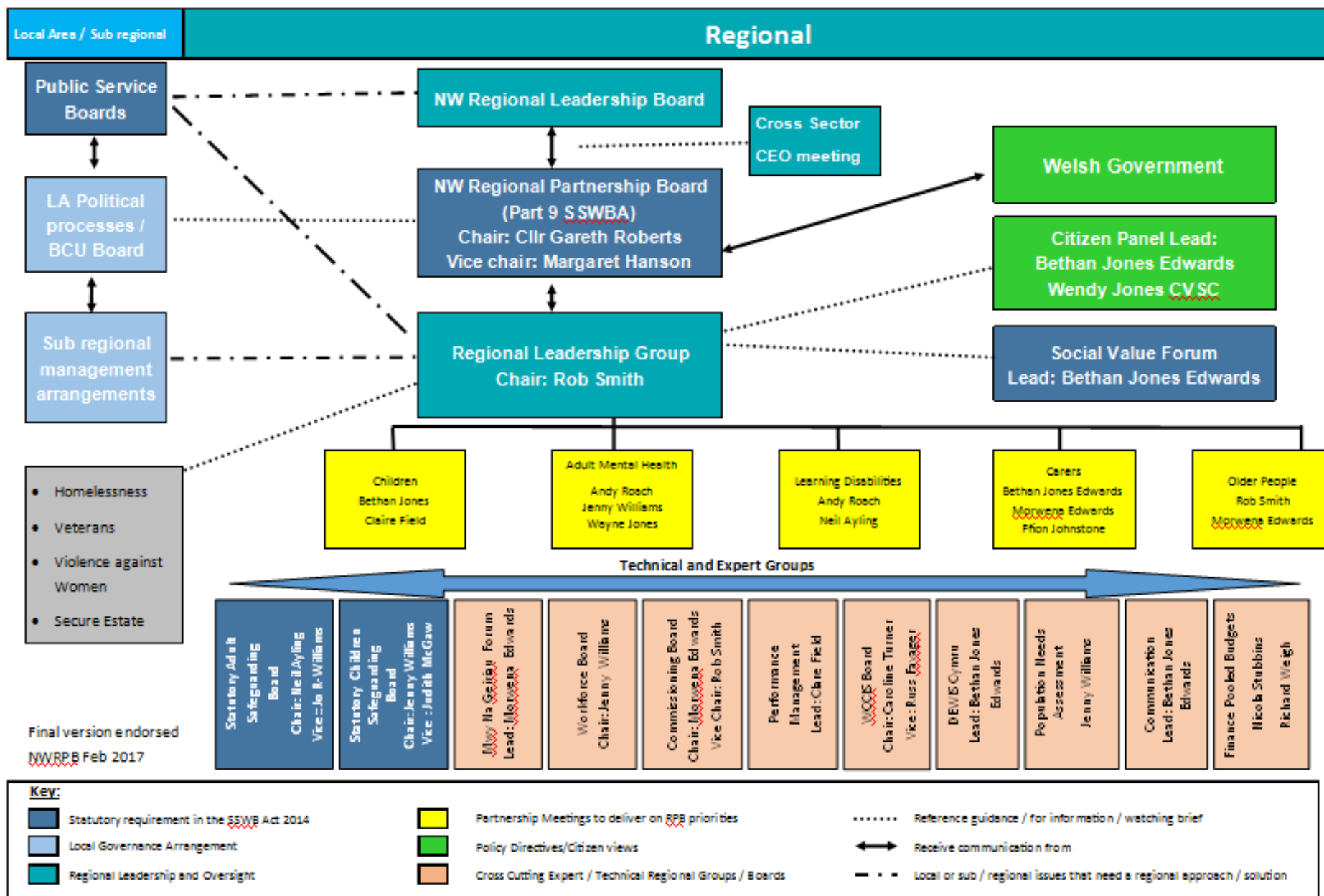
The Regional Partnership Board must use the Integrated Care Fund (ICF) to support schemes and activities that provide an effective, integrated and collaborative approach in relation to the following Regional Partnership Board priorities for integration:

- Older people with complex needs and long term conditions, including dementia and their carers
- People with learning disabilities
- Children with complex needs due to disability or illness
- Carers including young carers

The ICF budget for North Wales is £11,500,000 for 2017-18 for revenue and capital £2,200,000. Part of the ICF funding is also ring-fenced for the Integrated Autism Service and Community Care Information System (WCCIS).

For more information for the specific projects funded by the grant please see the website [\[add link\]](#).

Figure 1: Delivering Transformation Regional Structure



## Part A: Regional priorities

The priorities that the Regional Partnership Board have chosen to deliver in partnership are integration of services in relation to:

- Older people with complex needs and long term conditions, including dementia
- People with learning disabilities
- Carers, including young carers
- Children and young people
- Integrated Family Support Services
- Mental health

The first five priorities were chosen as priorities for integration to meet the statutory duties for integration of services in Part 9 of the Social Services and Well-being (Wales) Act 2014. In addition, the board has chosen mental health as a priority. The statutory duty for children and young people is to integrate services for children with complex needs due to disability or illness. The board have agreed to expand this to include additional priorities for children and young people. The Regional Partnership Board agreed to adopt these priorities in November 2016 based on local needs and current capacity. As each project is completed the board will review the lessons learned and the population assessment to choose the next priority area.

Overall 88% of respondents to the consultation agreed with these priorities. A number of people commented that the priority 'older people with complex needs and long term conditions, including dementia' should be expanded to include all adults. Prioritising integrated services for older people is what Regional Partnership Board legally must do, however there is more information in [part B](#) of the plan about support available for all adults with care and support needs, including younger people with dementia. More information about the consultation findings and our response is available in the consultation report [\[add link\]](#).

The table below gives information about the Regional Partnership Board's plans for integrated working in their priority areas. Progress against these plans will be included in the board's annual report available at:

<https://www.northwalescollaborative.wales/regional-partnership-board/>

More information about other activities taking place regionally and locally are available in [part B](#) which summarises the wider response to the issues identified in each population assessment chapter.

## Regional partnership board action plan: Integration of services

Regional priority	Action / how will we deliver	Partner agencies and lead partner	Timescales / milestones	Resources (including ICF projects)	IAA	Preventative	Alt. models
<b>Children and young people</b> See also <a href="#">children and young people's chapter</a> .							
Children and young people <ul style="list-style-type: none"> <li>• Children with complex needs</li> <li>• Prevention and mitigation of Adverse Childhood Experiences – delivering trauma informed services</li> <li>• Improving outcomes in the first 1,000 days of life</li> <li>• Improving emotional health, mental well-being and resilience of children and families</li> <li>• Promotion of healthy weight and prevention of childhood obesity</li> <li>• Review of crisis intervention for children and young people who are experiencing an urgent perceived mental health crisis</li> </ul>	Priority areas were agreed by the Children's Transformation Group during a workshop on 7 June 2017. Project teams and leads have been established for each priority along with terms of reference including scope, outcomes, key partners and relationships between the priorities.	<i>RPB Lead/Sponsor</i> : Bethan Jones and Clare Field The Children's Transformation Group is leading on this priority. It is a multiagency meeting with membership from Social Services, Education, CAMHS, Youth Justice, Community Paediatrics/Children's Services, Acute Paediatrics, Voluntary Sector, Adult Mental Health and Police. It is currently chaired by the Area Director (Central) BCU.	Produce communication and engagement plan by 2018. Produce 3 year Children and Young People Plan for North Wales for 2018-21 including project activities, timescales and quarterly milestones.				
Integrated Family Support Services	Services are already configured sub-regionally across North Wales Programme of integration to be defined and agreed by leads by April 2017 (scope and delivery plan)	<i>RPB Lead/Sponsor</i> : Clare Field WCBC  <i>Partners</i> : The six local authorities.	Annual report to RPB	Mainstreamed service. Consider pooling budgets where this is not currently the case as pooled budget is stipulated in the act.		✓	
Young carers ( <a href="#">see carers section</a> )							

Regional priority	Action / how will we deliver	Partner agencies and lead partner	Timescales / milestones	Resources (including ICF projects)	IAA	Preventative	Alt. models
<b>Older people</b> See also <a href="#">older people's chapter</a>							
Integration of services for older people with complex needs and long term conditions, including dementia	Programme of integration defined and agreed in scope and delivery plan	Rob Smith and Morwena Edwards	Workshop 28 November 2017				
Maintain a sustainable provider market across North Wales	<p>Understand the issues that face the provider sector in North Wales and impact on their business sustainability to include funding, processes and flows, workforce, quality of care and so on.</p> <p>This also links to the work programmes of the Regional Commissioning Board and Regional Workforce Boards</p> <p>5 day partnership workshop to agree areas of work to be taken forward regionally. Share findings in a regional position statement.</p>	<p><i>RPB Lead/Sponsor:</i> Chair of the leadership group</p> <p><i>Partners:</i> The six local authorities and health</p>	<p>Care home market analysis completed.</p> <p>Market Position Statement / Care Home Market Shaping statement. Sign off during 2017.</p> <p>Regional domiciliary care tendering exercise during 2017-18.</p> <p>Pilot projects (pooled budgets). Report to RPB April 2018</p> <ul style="list-style-type: none"> <li>• Community services – Ffordd Gwynedd (Tywyn, Gwynedd). Report to RPB April 2018.</li> <li>• Flintshire care home capacity (south Flintshire). Report to RPB April 2018</li> <li>• Conwy section 117 care home placements.</li> </ul>				

Regional priority	Action / how will we deliver	Partner agencies and lead partner	Timescales / milestones	Resources (including ICF projects)	IAA	Preventative	Alt. models
<b>Learning disabilities</b> See also <a href="#">learning disability chapter</a>							
Integration of services for people with learning disabilities <i>See scope and delivery plan for details</i>	Understand the partnership approach required to develop an integrated service; explore different models and best practice	<i>RPB Lead/Sponsor:</i> Andy Roach BCUHB / Neil Ayling Flintshire County Council  <i>Partners:</i> The six local authorities and BCUHB through the Learning Disability Partnership Group	Report to the RPB February 2018	Will look at resources as part of initial scoping requirements.			
	Planning and working towards developing integrated services in a phased approach. Consider pooled budgets and develop where appropriate	<i>RPB Lead/Sponsor:</i> Andy Roach BCUHB / Neil Ayling Flintshire County Council  <i>Partners:</i> The six local authorities and BCUHB Disability Partnership Group	To be agreed				
<b>Mental health</b> See also <a href="#">mental health chapter</a>							
Develop an integrated mental health strategy	Collaborative approach to the developing of the integrated MH Strategy for North Wales Together for mental health partnership board has reconvened and is driving the delivery of this priority.	<i>Lead partner:</i> BCUHB <i>RPB Lead/Sponsor:</i> Andy Roach BCUHB / Jenny Williams Conwy County Borough Council <i>Partners:</i> The six local authorities, BCUHB and the third sector	Strategy completed and signed off. Delivery – annual report to the Regional Partnership Board				



Regional priority	Action / how will we deliver	Partner agencies and lead partner	Timescales / milestones	Resources (including ICF projects)	IAA	Preventative	Alt. models
<b>Carers</b> See also <a href="#">carers chapter</a>							
Integration of services for Carers, including young carers <i>See scope and delivery plan for details</i>	Map current provision and services and assess these against the requirements in the Social Services and Well-Being (Wales) Act 2014  Explore and develop approaches for integrated Carer's services and consider whether a pooled budget can be created to support these services	<i>RPB Lead/Sponsor:</i> Bethan Jones Edwards / Morwena Edwards GC / Ffion Johnstone BCUHB <i>Partners:</i> The six local authorities, BCUHB, providers	Carers stories work completed. Resource mapping December/January 2018) Workshops November/December 2017 Report March 2018	Regional Carers Business Manager to end of March 2018. Carers transitional grant funding			

# Part B: Response to population assessment chapters and core themes

The population assessment was structured into chapters based on the core themes listed in the [Part 2 Code of Practice](#). These are listed below. Although the plan is split into chapters there are many overlaps between them and individuals with multiple care and support needs.

Clicking on the links will take you to the equivalent chapter in this plan.

- [children and young people](#)
- [older people](#)
- [health / physical disabilities](#)
- [learning disability / autism](#)
- [mental health](#)
- [sensory impairment](#)
- [carers who need support](#); and
- [violence against women, domestic abuse and sexual violence](#).

We also included additional chapters on:

- [Secure estate](#)
- [Veterans](#)
- [Housing and homelessness](#)

Part A of this plan listed the integrated working that the Regional Partnership Board have planned in response to the population assessment. Parts B and C list other activities planned in response to the population assessment findings from each chapter.

To save space and avoid duplication we have provided links to more information wherever possible. When planning services we recommend going back to the relevant [population assessment chapter](#) and consultation reports for full details about what care and support is needed. Please [contact us](#) for details of feedback received after the population assessment was published.

# Children and young people

## Population assessment: what we found out

- There are 140,000 children and young people aged 0-17 in North Wales. There has been very little change in the number of children in North Wales over the past five years and a trend towards lower birth rates may mean the number remains similar or reduces slightly over the next 25 years.
- There has been a fall in referrals to children's services, but this may change as eligibility changes. Most referrals are from the police or within the council and half are due to abuse or neglect.
- In the last five years there has been a 9% increase in the number of children on the child protection register.
- There are 1,000 children looked after by councils in North Wales and the number is increasing. Councils have to try to place children with family or friends before other placements which is changing the demands on fostering services.
- There are more disabled children and children with very complex needs.
- Most children are healthy but we still need to promote healthier lifestyles, prevent adverse childhood experiences and improve health in the first 1,000 days of each child's life.
- Sexting and online bullying are an increasing problem.
- The number of young offenders is decreasing but more young people are reporting that they are victims of crime.
- Many people are concerned about children's mental health including a rise in self-harm and eating disorders.
- Services for children and young people must take a child-centered and family-focused approach that takes into account the different needs of people with protected characteristics.

## How the report findings will be addressed

Issue	Lead organisation	What's being done	Regional Partnership Board role
<p>Children and young people</p> <ul style="list-style-type: none"> <li>• Children with highly complex needs</li> <li>• Prevention and mitigation of Adverse Childhood Experiences – delivering trauma informed services</li> <li>• Improving outcomes in the first 1,000 days of life</li> <li>• Improving emotional health, mental well-being and resilience of children and families</li> <li>• Promotion of healthy weight and prevention of childhood obesity</li> <li>• Review of crisis intervention for children and young people who are experiencing an urgent perceived mental health crisis</li> </ul>	<p>Regional Partnership Board through Children's Transformation Group</p>	<p><a href="#">Regional Partnership Board Priority</a> Producing Children and Young People Plan for North Wales for 2018-21 Mental Health Strategy Board</p>	<p>The RPB lead on this priority</p>
<p>Integrated Family Support Services</p>	<p>Regional Partnership Board</p>	<p><a href="#">Regional Partnership Board Priority</a></p>	<p>The RPB lead on this priority</p>
<p>Young carers (<a href="#">see carers section</a>)</p>	<p>Regional Partnership Board</p>	<p><a href="#">Regional Partnership Board Priority</a></p>	<p>The RPB lead on this priority</p>
<p>Early intervention and prevention including Adverse Childhood Experiences (ACEs) and parenting support</p>	<p>BCUHB and Public Services Boards supported by Public Health Wales North Wales Police North Wales Safeguarding Children's Board (NWSCB) Third sector, voluntary and community organisations</p>	<p>BCUHB Living Healthier, Staying Well Strategy: improving health, reducing health inequalities Families First Flying Start Developing a North Wales referral form covering information about ACEs to be launched January 2017</p>	<p>Links to the Regional Partnership Board's children and young people priority: first 1,000 days.</p>
<p>Promote healthier lifestyles and reducing health inequalities</p>	<p>BCUHB and</p>	<p><a href="#">Getting North Wales Moving Programme</a></p>	<p>Links to the Regional Partnership Board's children and young</p>

Issue	Lead organisation	What's being done	Regional Partnership Board role
	Public Services Boards supported by Public Health Wales Third sector, voluntary and community organisations.	BCUHB Living Healthier, Staying Well Strategy: improving health, reducing health inequalities	people priority: healthy weight in childhood
Embed new duties from the act including assessments, IAA and duty to report child at risk, When I'm Ready, widening eligibility criteria for assessment	Local authorities	Regional When I'm Ready policy in place. Work underway to develop assessments	Aligns with RPB priorities and will be taken forward by partner agencies as part of their core business. Regional projects monitored by NWHoCs.
Respond to rise in looked-after children and changing demands on fostering services, improve outcomes for looked-after children.	Local authorities NWHoCs	Develop North Wales Fostering Strategy National Fostering Framework Fostering team managers meet quarterly to share best practice. Participate as a region in the Children's Commissioning Consortium Cymru (4Cs) framework for foster care services. Plan regional tender for residential care and residential care with education placements by the end of 2017.	Aligns with RPB priorities and will be taken forward by partner agencies as part of their core business. Regional projects monitored by NWHoCs.
Provide support for care leavers	Local authorities Third sector, voluntary and community organisations Housing associations and Registered Social Landlords	Projects to support young people who are not in education, employment or training (NEETs)	Aligns with RPB priorities and will be taken forward by partner agencies as part of their core business
Respond to increasing and additional demands on services from looked-after children from outside of the region who are placed in North Wales	Local authorities including housing departments Youth Justice System	Reviewed data in population assessment	Aligns with RPB priorities and will be taken forward by partner agencies as part of their core business
Provide efficient and effective adoption services	North Wales Adoption Service	National Adoption Service	Aligns with RPB priorities and will be taken forward by partner agencies as part of their core

Issue	Lead organisation	What's being done	Regional Partnership Board role
			business. Monitored by NWHoCs.
Respond to rise in number of children on the child protection register	Local authority Regional governance provided by NWHoCs NWSCB	Findings shared with local authorities. NWSCB monitor number of children on the register. Present quality assurance report every six months. Audit reasons children remain on the register	Aligns with RPB priorities and will be taken forward by partner agencies as part of their core business. Monitoring by NWSCB
Address sexting and online bullying concerns	NWSCB Education	<a href="#">NWSCB strategic priorities</a> NWSCB to support the implementation of the NSPCC Stop IT toolkit	Aligns with RPB priorities and will be taken forward by partner agencies as part of their core business. Delivery monitored by NWSCB.
Respond to increase in young people reporting that they are victims of crime	<a href="#">North Wales Police</a>	Share report findings	Aligns with RPB priorities and will be taken forward by partner agencies as part of their core business.
Improve resettlement services for young offenders	North Wales Resettlement Broker Co-ordination Project	North Wales Resettlement Broker Co-ordination Project	Aligns with RPB priorities and will be taken forward by partner agencies as part of their core business.
Address speech, language and communication needs	Local authorities, BCUHB Third sector, voluntary and community organisations	Collated additional information to include in review Shared findings with Families First and Flying Start (support for parents)	Aligns with RPB priorities and will be taken forward by partner agencies as part of their core business.
Provide sufficient childcare	Local authorities Childcare providers	Childcare sufficiency assessments	Aligns with RPB priorities and will be taken forward by partner agencies as part of their core business.
Promote play opportunities and children's right to play	Local authorities Third sector, voluntary and community organisations.	Play sufficiency assessments	Aligns with RPB priorities and will be taken forward by partner agencies as part of their core business.
Promote Children's Rights and the UNCRC	All partners	Local projects	Aligns with RPB priorities and will be

Issue	Lead organisation	What's being done	Regional Partnership Board role
			taken forward by partner agencies as part of their core business. RPB projects should promote children's rights and the UNCRC
Support children and young people with ASD	National autism service Local authority ASD leads, BCUHB Third sector, voluntary and community organisations.	Implementation of National Autism Service	The RPB are responsible for delivering the IAS in North Wales and receive regular updates on progress.
Support refugees and asylum seeking children	Local authorities Third sector, voluntary and community organisations	Local projects	Aligns with RPB priorities and will be taken forward by partner agencies as part of their core business.
Support young people with care and support needs with transition to adult services	Local authorities BCUHB	Local projects	Aligns with RPB priorities and will be taken forward by partner agencies as part of their core business.

# Older people

## Population assessment: what we found out

- There are 150,000 people aged 65 and over in North Wales. We expect there will be 210,000 by 2039, which will be 30% of the total population.
- The counties likely to have the highest proportion of people aged 65 and over are Conwy, Anglesey and Denbighshire.
- Around 82,000 people are aged 85 and over in North Wales and we expect there will be more than twice as many by 2039 which is likely to increase the need for care and support.
- Reducing loneliness and isolation is one of the main challenges identified in our consultation and engagement.
- Continuing to live in their own homes is a priority for many older people. The demand for support to live at home is likely to increase as the number of older people increases. More people are needing more complex support and a higher number of hours care each week.
- Around 11,000 people live with dementia in North Wales. This is likely to increase but not by as much as first thought due to improvements in health.
- We are likely to need more nursing home places, particularly supporting people with mental health needs and dementia.
- Research suggests living with a long-term condition can be a stronger predictor of the need for care and support than age.
- Services developed need to take account of the different needs of people with protected characteristics. Issues identified included: higher risks of loneliness for men and disabled people; findings from the Minority Ethnic Elders Advocacy Project; cyber-crime, personal safety and hate crime; and, dementia awareness with a particular focus on older transgender people and support for older LGBT people.
- Services must take into account the United Nations Principles for Older Persons and Welsh Government's Declaration of the Rights of Older People in Wales.



## How the report findings will be addressed

Issue	Lead organisation	What's being done	Regional Partnership Board role
Integration of services for older people with complex needs and long term conditions, including dementia	Regional Partnership Board	<a href="#">Regional Partnership Board Priority</a>	The RPB lead on this priority
Maintain a sustainable provider market across North Wales	Regional Partnership Board	<a href="#">Regional Partnership Board Priority</a>	The RPB lead on this priority
<p>Support people affected by dementia</p> <ul style="list-style-type: none"> <li>• Provide more information and support after diagnosis</li> <li>• Additional training for care workers in working with people who have dementia</li> <li>• Develop additional services that meet individual needs, particularly for younger people with dementia and through the medium of Welsh</li> <li>• Make sure there is sufficient mental health nursing provision and residential care for older people</li> <li>• Improve joint working between services</li> </ul>	<p>Local authorities BCUHB Third sector, voluntary and community organisations Housing associations and Registered Social Landlords</p>	<p><a href="#">Ageing Well Plans</a> <a href="#">Regional Partnership Board priority</a> <a href="#">Dementia RED: a regional project to provide Care Information Centre Points in GP surgeries</a> BCUHB Dementia Strategy</p>	<a href="#">Regional Partnership Board priority</a>
Reduce loneliness and isolation in our communities	<p>Local authorities Third sector, voluntary and community organisations Housing associations and Registered Social Landlords</p>	<p><a href="#">Ageing Well Plans</a> <a href="#">PSB Well-being Plans</a> Links to <a href="#">social prescribing</a></p>	<p>The RPB promote Dewis Cymru and monitor quality of 'what matters' assessment implementation Will also be taken forward by partner agencies as part of their core business.</p>
Promote independent living; people's choice and control over their own lives	<p>Local authorities BCUHB Advocacy services</p>		Quality monitoring of 'what matters' assessment implementation

Issue	Lead organisation	What's being done	Regional Partnership Board role
Perspective and needs of older people around delivery of health, health-care and well-being services	BCUHB	Older people delivery framework – outcomes focussed approach in providing health, health care and well-being services	Aligns with RPB priorities and will be taken forward by partner agencies as part of their core business.
Promoting healthier lifestyles and reducing health inequalities	Health Board Public Services Boards (both supported by Public Health Wales) Third sector, voluntary and community organisations	<a href="#">Getting North Wales Moving Programme</a> BCUHB Living Healthier, Staying Well Strategy: improving health, reducing health inequalities PSB Well-being Plans	Aligns with RPB priorities and will be taken forward by partner agencies as part of their core business.
Care and support at home (domiciliary care)	Local authorities Third sector, voluntary and community organisations Housing associations and Registered Social Landlords	North Wales collaborative commissioning process: North Wales Domiciliary Care Agreement and Framework Management (work starting September 2017, framework in place from April 2018 until March 2025. <a href="#">Social Care Wales care and support at home in Wales: Five year strategic plan 2017-2022</a>	The RPB leads the design and provision of care and support at home through the work of the commissioning board.
Need for quality nursing home and care home places (Strategic commissioning of care homes)	North Wales Commissioning Board Regional workforce board	Developing Market Position Statement. Workforce board to monitor workforce trends in care homes. Track and evaluate homes within escalating concerns process. Joint audit monitoring tool between BCUHB and contract officers is being launched around quality assurance in care homes.	The RPB receives reports from the commissioning board
Developing greater support for good end of life care	BCUHB Hospices	BCUHB Older People's Strategy and Care closer to home group	Aligns with RPB priorities and will be taken forward by partner agencies as part of their core business.

# Health, physical disability and sensory impairments

## Population assessment: what we found out

- Around 80% of people in North Wales say they are in good health. This is better than the Welsh average although it varies from place to place.
- People who live in more deprived areas in North Wales tend to have poorer health than people living in less deprived areas.
- Around one third of people in North Wales are living with a chronic condition, such as high blood pressure, asthma or diabetes.
- The number of people who have visual or hearing impairments is expected to increase as people live longer.
- The number of people living with a limiting long-term illness is predicted to increase by around 20% by 2035 due to people living longer.
- Lifestyle issues affecting health include smoking, obesity, physical activity and alcohol.
- Disabled people told us that their local communities, services and public transport need to be more accessible. Public services need to listen more and involve them in developing services.
- BME people can experience additional barriers to accessing health and social care services.
- Around 1 in 4 of the Black and Minority Ethnic (BME) population employed in North Wales work in health and social care.

## How the report findings will be addressed

Issue	Lead organisation	What's being done	Regional Partnership Board role
Review specialised services and provide care closer to home	BCUHB	BCUHB Older People's Strategy and Care closer to home group	Aligns with RPB priorities and will be taken forward by partner agencies as part of their core business.
Develop primary care and community resources to provide quicker access and more holistic services	BCUHB Care Closer to Home programme Third sector, voluntary and community organisations	BCUHB Community services transformation board, primary care transformation board, Care Closer to Home group	Aligns with RPB priorities and will be taken forward by partner agencies as part of their core business.
Promote healthier lifestyles and reducing health inequalities	BCUHB and Public Services Boards supported by Public Health Wales	<a href="#">Getting North Wales Moving Programme</a> BCUHB Living Healthier, Staying Well Strategy: improving health, reducing health inequalities	Aligns with RPB priorities and will be taken forward by partner agencies as part of their core business. The RPB receive updates from the health board where appropriate.
Develop social prescribing – strengthen the links between healthcare providers and community, voluntary and local authority services	BCUHB and partner organisations including third sector, voluntary and community organisations	BCUHB Health Improvement, Health Inequalities and Care Closer to Home programmes. North Wales conference held 25 November 2017. Development of navigator roles for social prescribing.	Aligns with RPB priorities and will be taken forward by partner agencies as part of their core business.
Provide support for people with physical disabilities and sensory impairments. Build on the social model of disability - develop services that facilitate participation, respect for individual needs and inclusivity.	Local authorities BCUHB Third sector, voluntary and community organisations	Promotion of equality and inclusion. Development of accessible services. See <a href="#">consultation report</a> for responses about services available.	Aligns with RPB priorities and will be taken forward by partner agencies as part of their core business.

Issue	Lead organisation	What's being done	Regional Partnership Board role
<p>Provide support for people with chronic conditions.</p>	<p>Local authorities BCUHB Third sector, voluntary and community organisations</p>	<p>Support for people with long term conditions will be a significant element of the BCUHB Care Closer to Home programme and the development of support through local cluster teams.</p> <p>See <a href="#">consultation report</a> for responses about services available.</p>	<p>Aligns with RPB priorities and will be taken forward by partner agencies as part of their core business.</p> <p>Linked to <a href="#">older people's workstream</a></p>

# Learning disabilities

## Population assessment: what we found out

- There are around 2,700 people with learning disabilities on local council registers in North Wales. The actual number of people with learning disabilities may be higher.
- The number of people with learning disabilities needing support is increasing and people with learning disabilities are living longer. These trends are likely to continue.
- People with learning disabilities tend to experience worse health, have greater need of health care and are more at risk of dying early compared to the general population.
- There are likely to be more young people with complex needs needing support.
- People with learning disabilities may have other protected characteristics and experience additional disadvantage because of these. For example, older people with learning disabilities and people with profound and multiple disabilities and the use of the Welsh language.

## How the report findings will be addressed

Issue	Lead organisation	What's being done	Regional Partnership Board role
Integration of services for people with learning disabilities	Regional Partnership Board	<a href="#">Regional Partnership Board Priority</a>	The RPB lead on this priority
Support older carers and older people with learning disabilities	Local authorities BCUHB Third sector, voluntary and community organisations Housing associations and Registered Social Landlords	Part of the RPB <a href="#">Learning Disability workstream</a> being delivered by the Learning Disability Partnership	The RPB leads on this priority through the work of the Learning Disability Partnership
Promote good health of older people with learning disabilities and support people with learning disabilities who have dementia	BCUHB Local authorities Third sector, voluntary and community organisations	Part of the RPB <a href="#">Learning Disability workstream</a> being delivered by the Learning Disability Partnership	The RPB leads on this priority through the work of the Learning Disability Partnership

Issue	Lead organisation	What's being done	Regional Partnership Board role
Develop more access in the community to support people with a learning disability, including work and friendships.	Third sector, voluntary and community organisations	Part of the RPB <a href="#">Learning Disability workstream</a> being delivered by the Learning Disability Partnership	The RPB leads on this priority through the work of the Learning Disability Partnership
Safeguarding adults with learning disabilities, including with technology and when out and about	Local authorities NWSAB North Wales Police Safeguarding training and workforce group, Local authority training Third sector, voluntary and community organisations Housing associations and Registered Social Landlords	Part of the RPB <a href="#">Learning Disability workstream</a> being delivered by the Learning Disability Partnership. NWSAB to raise awareness of the risk of financial abuse, scams and so on. Ensure the workforce supporting adults with learning disabilities is aware of the risk around financial abuse.	The RPB leads on this priority through the work of the Learning Disability Partnership
Support for young people age 16 to 25 moving between children's and adults services, including young people with very complex needs	Local authorities BCUHB Third sector, voluntary and community organisations	Part of the RPB <a href="#">Learning Disability workstream</a> being delivered by the Learning Disability Partnership	The RPB leads on this priority through the work of the Learning Disability Partnership
See <a href="#">ASD chapter</a> for more information about the gap in support for adults on the autism spectrum.			

# Mental health and substance misuse

## Population assessment: what we found out

- An estimated 92,000 adults in North Wales are affected by mental health issues, 16% of the population.
- People in North Wales report slightly better mental health than in Wales as a whole.
- The number of people with mental health needs is likely to increase.
- The most common mental illnesses reported are anxiety and depression.
- Research suggests a high number of people with mental health needs are not seeking help.
- There has been an issue with the number of people who are being admitted to mental health facilities outside of the region, which is being addressed as part of the mental health strategy.
- The number of people with more complex needs is increasing.
- People with mental health issues are more likely to have poor physical health.
- The consultation identified that Black, Asian and Minority Ethnic (BAME) groups are facing increasing levels of harassment and those who live outside areas in which minorities cluster are more likely to experience harassment. Harassment damages mental health even among those who do not directly experience it.
- Risk factors for mental health needs disproportionately affect people from marginalized groups. For example, BAME groups, LGBTQ people, people with physical disability, sensory impairments or long term health conditions; refugees and asylum seekers.
- The population assessment linked to the work of the [Area Planning Board for substance misuse](#).



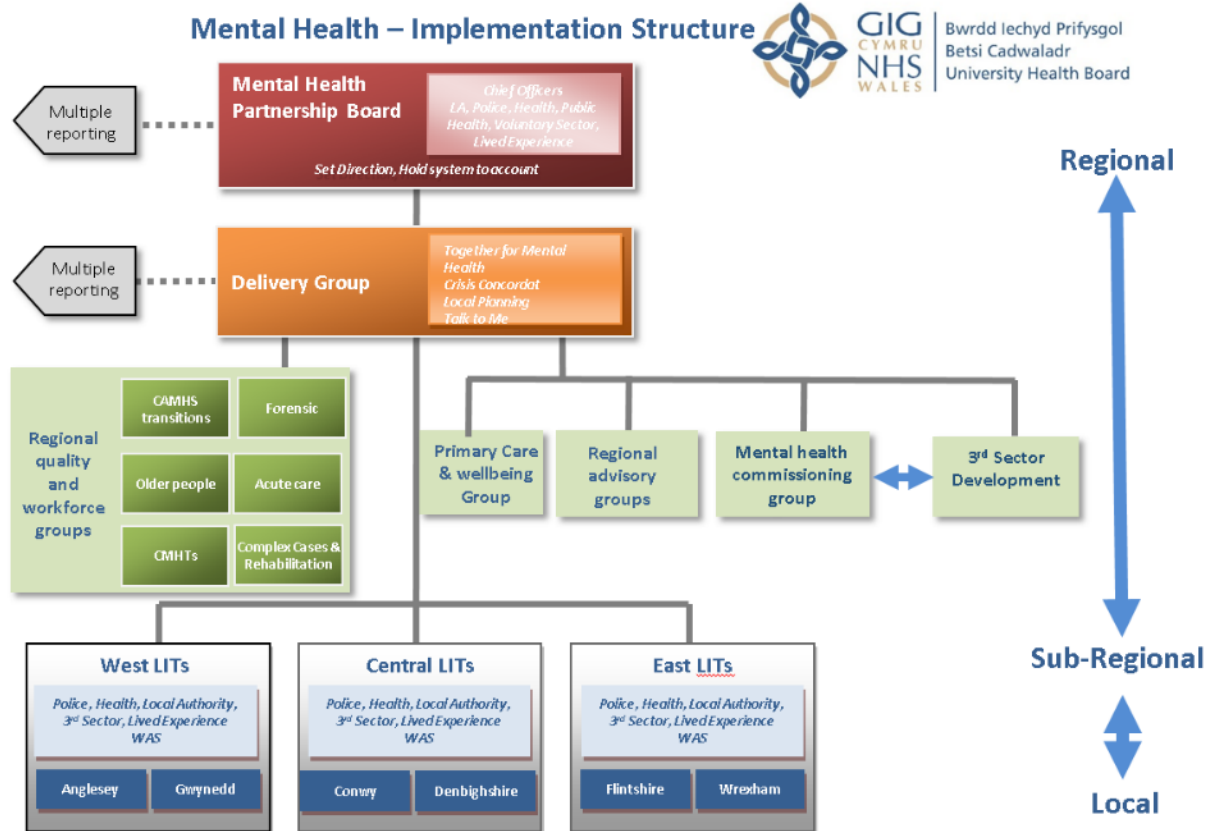
## How the report findings will be addressed

Issue	Lead organisation	What's being done	Regional Partnership Board role
Develop an integrated mental health strategy	Regional Partnership Board	<a href="#">Regional Partnership Board Priority</a>	The RPB lead on this priority
<p>Improving mental health services, including:</p> <ul style="list-style-type: none"> <li>• Promote health and well-being for everyone, focussing on prevention of mental ill health, and early intervention when required;</li> <li>• Treat common mental health conditions in the community as early as possible;</li> <li>• Are community-based wherever possible, reducing our reliance on inpatient care</li> <li>• Identify and treat serious mental illness as early as possible;</li> <li>• Manage acute and serious episodes of mental illness safely, compassionately, and effectively;</li> <li>• Support people to recovery, to regain and learn the skills they need after mental illness</li> <li>• Assess and treat the full range of mental health problems, working alongside services for people with physical health needs.</li> </ul>	<p>BCUHB Local authorities Third sector, voluntary and community organisations</p>	<p>BCUHB Mental Health Strategy North Wales Together for Mental Health Partnership Board reconvened in July</p>	<p>The work is being led by the Together for Mental Health Partnership Board which reports to the Regional Partnership Board.</p>
<p>Promote mental well-being, including providing befriending opportunities to access existing social activities and employment opportunities Better identification of mental health needs and early intervention</p>	<p>BCUHB, local authorities and PSBs, supported by Public Health Wales Third sector, voluntary and community organisations</p>	<p>BCUHB Mental Health Strategy Well-being assessments and plans</p>	<p>Aligns with RPB priorities and will be taken forward by partner agencies as part of their core business. Together for mental health board reports to the RPB</p>

Issue	Lead organisation	What's being done	Regional Partnership Board role
Reduce suicides and self-harm in the population.	North Wales Suicide and Self Harm Prevention Group and Local Implementation Teams in each council area.	North Wales Suicide and self-harm reduction strategic plan 2018-21 <a href="#">[add link]</a>	The North Wales Suicide and Self Harm Prevention Group reports to the Together for Mental Health Partnership Board which reports to the RPB.
Substance misuse	Area Planning Board for substance misuse	Improvement in outcomes for service users; service user involvement; and engagement with recovery programmes. Harm reduction group monitoring potential increase in drug related deaths across Wales. Core standards due to be reviewed nationally.	Annual report from the area planning board to the RPB

See [ASD chapter](#) for more information about the gap in support for adults on the autism spectrum.

Many of the report findings will be addressed through the Together for Mental Health implementation structure below.



# Carers

## Population assessment: what we found out

- Carers provide a crucial role in the provision of care and support, providing between 70% and 95% of care, saving £7.72 billion every year in Wales. There is therefore a case for developing and preparing services for carers first.
- The number of carers in North Wales is increasing, particularly in north-west Wales.
- People aged 50 to 64 are the most likely to provide unpaid care.
- Half of all carers in North Wales are in employment: for carers in employment the support of their employer and colleagues is vital to helping them continue in their caring role.
- The increase in need for social care identified in other chapters of the population assessment report is likely to lead to greater numbers of people providing unpaid care and providing care for longer.
- There are over 1,000 young carers identified across North Wales, which is an increase over the past few years.
- People with protected characteristics may experience multiple disadvantages due to their caring role and additional barriers to accessing support.

## Service mapping and gathering carers' stories: what we found out

- Early identification of carers is key in order to ensure that they are considered on an equal basis to the person cared for.
- As all carers' situations are unique, they have needs for tailored packages of support, taking into account their personal circumstances and the emotional impact of their caring role.

## How the report findings will be addressed

Issue	Lead organisation	What's being done	Regional Partnership Board role
Integration of services for carers, including young carers	Regional Partnership Board	<a href="#">Regional Partnership Board Priority</a>	The RPB lead on this priority
Develop carers assessments and joint assessments that meet the requirements of the act and help achieve good outcomes for carers	Local authorities North Wales Carers' Strategy Group	Implementing 'What matters' assessments Carers' Strategy Group considering use of language (carers not seeing themselves as carers) and improving consistency across North Wales	<a href="#">Regional Partnership Board priority</a> Monitor implementation of the act and numbers of assessments completed.
Early identification and support for carers	BCUHB including GPs	Royal college of GPs assessment tool pilot	<a href="#">Regional Partnership Board priority</a>
Provide sufficient, flexible carer break provision	Local authorities North Wales Carers' Strategy Group Third sector, voluntary and community organisations	Regional carers projects Social prescribing Community navigators	Carers Strategic Group report to the North Wales Leadership Group Also taken forward by partner agencies as part of their core business.
Support carers in employment	Employers across North Wales Link to work of PSBs Third sector, voluntary and community organisations	Regional carers projects	
Support carers by better meeting the needs of the cared for person	Local authorities BCUHB Third sector, voluntary and community organisations	See other chapters.	
Young carers	Local authorities, including social services and schools BCUHB Third sector, voluntary and community organisations	Young carers' services in place across the region. Commissioned sub-regionally. Young carers sub-group	

# Violence against women, domestic abuse and sexual violence

## Population assessment: what we found out

- Domestic and sexual violence and abuse are under-reported but the number of reports is increasing.
- The total number of domestic incidents recorded by the police was around 11,000 and the number of recorded sexual offences was around 1,400 in North Wales during 2015-16.
- Domestic and sexual violence and abuse affects both women and men although women are more likely to experience them. Services should take into account the different needs of women and men and the needs of people in same sex partnerships.
- Cases of coercive control are now being recorded in North Wales since the offence came into effect in December 2015.
- Domestic abuse costs public services estimated £66 million a year in North Wales in health care, criminal justice, social services, housing and refuges, legal costs and lost economic output.

Suggested priorities for future work include:

- Developing stronger strategic and practice links between domestic abuse services and adult safeguarding. Raise awareness with staff about impact of domestic abuse on the people they work with.
- The need for support for children and young people who are witnessing domestic violence and abuse.
- Making sure there are sufficient options for housing victims of domestic violence and abuse who have additional care and support needs that require round the clock staffing.
- Find out more about the need for specialist support, such as floating support, for BAME people in North Wales.

## How the report findings will be addressed

Local authorities and local health boards have to prepare strategies by May 2018 under the Violence against Women, Domestic Abuse and Sexual Violence (Wales) Act 2015. A North Wales strategy is being prepared which will build on the findings of the population assessment and additional feedback received since publication. The strategy is available at: [\[add link once available\]](#)

Domestic abuse is a priority for the North Wales Safeguarding Children and Adult's Boards. They will continue to monitor domestic abuse trends through the North Wales Quality Assurance Framework. The North Wales Safeguarding Board Workforce and Training sub-group will monitor issues around compliance with training as will training officers in local authorities.

## Secure estate

### Population assessment: what we found out

- The number of prisoners from North Wales is usually between 760 and 850, of which 40-50 are female, 60-70 are young offenders and 50-60 are high security.
- The number of people held in prison has been increasing.
- The prevalence of mental illness, substance misuse and learning disabilities is higher among the adult prison population than the general population.
- The prison population made up of offenders aged 50 years or over has increased proportionately more than any other age group, which has implications for social care.
- Less than one percent of the total prison population have one or more personal care needs. The proportion increases with age with 13% of people age 65-74 and 23% of people aged over 75 having personal care needs.
- Children with a parent in prison are twice as likely as other children to experience conduct and mental health issues and three times more likely to offend themselves.
- A detailed North Wales Prison Health Needs Assessment and Adult Social Care Prison Strategy were carried out to inform the development of HMP Berwyn in Wrexham.

### How the report findings will be addressed

Issue	Lead organisation	What's being done	Regional Partnership Board role
Support adults with care and support needs in the secure estate within their county boundary	Local authorities in partnership with Her Majesty's Prison and Probation Service (HMPPS) and BCUHB Wrexham County Borough Council lead for HMP Berwyn Prison Health, Well-being and Social Care Partnership Board	Adult Social Care Prison Strategy (Wrexham County Borough Council) Welsh Government National Pathway for care and support for those in the secure estate.	Aligns with RPB priorities and will be taken forward by partner agencies as part of their core business.

Issue	Lead organisation	What's being done	Regional Partnership Board role
Provide continuity of care for offenders coming into their area on release	Local authorities Third sector, voluntary and community organisations Housing associations and Registered Social Landlords	Welsh Government National Pathway for care and support for those in the secure estate.	Aligns with RPB priorities and will be taken forward by partner agencies as part of their core business.
Support children with care and support needs in the secure estate	Local authorities		Aligns with RPB priorities and will be taken forward by partner agencies as part of their core business.
Improve resettlement outcomes for young people and adults	Youth Justice Board Local authorities Third sector, voluntary and community organisations Housing associations and Registered Social Landlords	North Wales Resettlement Broker Project. Llamau Report. Resettlement panel group in place for HMP Berwyn – including health and social care	Aligns with RPB priorities and will be taken forward by partner agencies as part of their core business.
Offenders held out of the region: particularly women, young offenders and men from other categories (HMP Berwyn is category C)	UK Government	Decisions about where to site prisons and other parts of the secure estate are taken by the UK Government. We will continue to highlight the needs of offenders held out of the region.	Aligns with RPB priorities and will be taken forward by partner agencies as part of their core business.
Support children and families of offenders	North Wales Safer Communities Board Local authorities BCUHB Third sector, voluntary and community organisations	Two regional posts funded to develop the programme for North Wales for children and families affected by the imprisonment of a family member North Wales Safeguarding Children's Board includes representation from HMP Berwyn	Links to first 1,000 days project and Adverse Childhood Experiences (ACEs) programmes. Aligns with RPB priorities and will be taken forward by partner agencies as part of their core business.



# Veterans

## Population assessment: what we found out

- A veteran is defined as someone who has served in HM Armed Forces for at least one day. This includes people who have served in the Reserve/Auxiliary Forces.
- There are an estimated 51,000 veterans living in North Wales, around 9% of the population over 16.
- The number of veterans is predicted to decline over future years to around 22,000 by 2030.
- The majority of veterans are aged 65 and over so in future a greater proportion of the veteran population will be made up of younger people with a more diverse background.
- Around one in five veterans have a long-term illness related to military service, such as musculoskeletal problems, hearing problems and mental health needs.
- All local authorities in North Wales have signed an Armed Forces Community Covenant, pledging to support service personnel and veterans in education, skills and employment; housing; health and well-being.

## How the report findings will be addressed

Issue	Lead organisation	What's being done	Regional Partnership Board role
Veterans' needs for social care; health and well-being; housing; education, skills and employment	Local authorities BCUHB Third sector, voluntary and community organisations Housing associations and Registered Social Landlords	<a href="#">Detailed needs assessment</a> completed to inform population assessment. Action plan developed by North Wales Armed Forces Forum Health Board Armed Forces Health Sub-Group established	Aligns with RPB priorities and will be taken forward by The North Wales Armed Forces Forum and by partner agencies as part of their core business.
Improving support for veterans, serving military personnel and their families across North Wales.	North Wales Armed Forces Forum Partners: BCUHB, Public Health Wales, local authorities, Armed Forces, North Wales Police, Welsh Government, third sector		

# Housing and homelessness

## Population assessment: what we found out

- Good quality housing is important for people’s health, education, employment and for creating strong communities.
- Most people want to stay in their own home as long as they can. Inclusive design and adaptations can help make this possible.
- There are unmet needs for specialist housing including extra-care housing, supported housing for people with learning disabilities, ‘move on’ accommodation for people with mental health needs, single person accommodation and emergency night time accommodation. There is a need for support for BME people with housing issues.

## How the report findings will be addressed

Issue	Lead organisation	What’s being done	Regional Partnership Board role
Housing assistance for people leaving the secure estate	Local authorities Third sector, voluntary and community organisations Housing associations and Registered Social Landlords	Welsh Government National Pathway. Local housing strategies <a href="#">Researching support services for people leaving prison in North Wales</a>	Aligns with RPB priorities and will also be taken forward by partner agencies as part of their core business. Work with Supporting People Regional Collaborative Committee.
Need for specialist housing	Local authorities Housing associations and Registered Social Landlords	Local housing strategies	
Preventing homelessness	Local authorities Third sector, voluntary and community organisations Housing associations and Registered Social Landlords		
Housing and mental health services collaboration	BCUHB and local authorities	Mental Health Rehab and Accommodation group. Produced commissioning statement Appointed supported housing development post	Aligns with RPB priorities and will be taken forward by partner agencies as part of their core business.

# Autism Spectrum Disorder (ASD)

## Population assessment: what we found out

- Around 1% of the UK population are estimated to be on the autistic spectrum with men four times as likely to be on the autistic spectrum as women.
- The number of autistic people has increased and is expected to continue to increase. This may be due to increased awareness and broadening of the concept of ASD.
- By 2035 the number of children on the autistic spectrum in North Wales is predicted to remain around 1,600 and the number of adults aged 18 and over is predicted to rise from 5,500 to 6,000.
- It is likely Autistic adults may not have a diagnosis as the assessment only became available in the early 1990s and has largely focused on children.
- Learning disability and mental health services currently provide some support to people on the autistic spectrum in North Wales. We identified a gap in support for Autistic people who are not eligible for those services.

## How the report findings will be addressed

Issue	Lead organisation	What's being done	Regional Partnership Board role
Develop an Integrated Autism Service for people not eligible for learning disability or mental health services	The North Wales Integrated Autism Service (IAS) Strategy Group	Development of the <a href="#">Integrated Autism Service</a> for North Wales.	The RPB are responsible for delivering the IAS in North Wales.
Develop training and awareness raising around ASD	North Wales Integrated Autism Service (IAS) Strategy Group	Plans being developed	Supporting the regional approach through the IAS Strategy Group.
Address the high suicide rate among Autistic people	North Wales Suicide and Self-Harm Prevention Group: Health Board, Public Health Wales, local authorities, Police, National Rail, third sector, voluntary and community organisations	Development of North Wales Suicide and Self-harm prevention strategic plan	The North Wales Suicide and Self Harm Prevention Group reports to the Together for Mental Health Partnership Board which reports to the RPB.

## Part C: Overall findings

### Population assessment: what we found out

All the chapters identified needs in relation to the following cross-cutting themes:

- Prevention and early intervention
- Information, advice and assistance
- Equality and human rights
- Advocacy
- Transport and access to services
- Availability of services in the Welsh language
- Promote social enterprises, co-operatives, user led services and the third sector
- Encourage informal support from family, friends and community networks and support carers
- Provide services based on 'what matters' to individuals
- Citizen voice
- Safeguarding
- Poverty and inequality
- Quality of population and performance data
- Challenges of delivering services in the current financial climate

### How the report findings will be addressed

The cross-cutting themes are all being addressed by partners as part of their core business. This work will support the implementation and embedding of the requirements of the Social Services and Well-being (Wales) Act 2014. All these cross-cutting issues need to be considered when developing regional priorities and fully integrated services.

More information can be found in each partner's plans and reports including corporate plans, strategic equality plans and local development plans below.

Organisation	Strategies and plans	Director of Social Services Annual Report
Betsi Cadwaladr University Health Board	<a href="http://www.wales.nhs.uk/sitesplus/861/page/87716">http://www.wales.nhs.uk/sitesplus/861/page/87716</a> <a href="#">Strategic equality plan</a>	
Isle of Anglesey County Council	<a href="http://www.anglesey.gov.uk/council-and-democracy/governance-and-performance/corporate-plan-and-performance/">http://www.anglesey.gov.uk/council-and-democracy/governance-and-performance/corporate-plan-and-performance/</a> <a href="#">Strategic equality plan</a>	<a href="http://www.anglesey.gov.uk/council-and-democracy/council-strategies-and-policies/social-care-housing-and-health/annual-report-of-the-director-of-social-services/114410.article">http://www.anglesey.gov.uk/council-and-democracy/council-strategies-and-policies/social-care-housing-and-health/annual-report-of-the-director-of-social-services/114410.article</a>
Gwynedd Council	<a href="https://www.gwynedd.llyw.cymru/en/Council/Strategies-and-policies/Corporate-plans-and-strategies/Corporate-plans-and-strategies.aspx">https://www.gwynedd.llyw.cymru/en/Council/Strategies-and-policies/Corporate-plans-and-strategies/Corporate-plans-and-strategies.aspx</a> <a href="#">Strategic equality plan</a>	<a href="https://www.gwynedd.llyw.cymru/en/Council/Performance-and-spending/Audits,-inspections-and-assessments/Annual-assessment-for-Social-Services.aspx">https://www.gwynedd.llyw.cymru/en/Council/Performance-and-spending/Audits,-inspections-and-assessments/Annual-assessment-for-Social-Services.aspx</a>
Conwy County Borough Council	<a href="http://www.conwy.gov.uk/en/Council/Strategies-Plans-and-Policies/Strategies-Plans-and-Policies.aspx">www.conwy.gov.uk/en/Council/Strategies-Plans-and-Policies/Strategies-Plans-and-Policies.aspx</a> <a href="#">Strategic equality plan</a>	<a href="http://www.conwysocialservicesannualreport.org.uk">www.conwysocialservicesannualreport.org.uk</a>
Denbighshire County Council	<a href="https://www.denbighshire.gov.uk/en/your-council/strategies-plans-and-policies/strategies-plans-and-policies.aspx">https://www.denbighshire.gov.uk/en/your-council/strategies-plans-and-policies/strategies-plans-and-policies.aspx</a> <a href="#">Strategic equality plan</a>	<a href="https://www.denbighshire.gov.uk/en/your-council/strategies-plans-and-policies/social-care/social-services-annual-report.aspx">https://www.denbighshire.gov.uk/en/your-council/strategies-plans-and-policies/social-care/social-services-annual-report.aspx</a>
Flintshire County Council	<a href="http://www.flintshire.gov.uk/en/Resident/Council-and-Democracy/Council-Plan.aspx">http://www.flintshire.gov.uk/en/Resident/Council-and-Democracy/Council-Plan.aspx</a> <a href="#">Strategic equality plan</a>	<a href="http://www.flintshire.gov.uk/en/PDF/Files/Social-Services/Social-Services-Annual-Report-2016-17.pdf">http://www.flintshire.gov.uk/en/PDF/Files/Social-Services/Social-Services-Annual-Report-2016-17.pdf</a>
Wrexham County Borough Council	<a href="http://www.wrexham.gov.uk/english/council/documents/index.htm">http://www.wrexham.gov.uk/english/council/documents/index.htm</a> <a href="#">Strategic equality plan</a>	<a href="http://www.wrexham.gov.uk/english/council/social_services/annual_report.htm">http://www.wrexham.gov.uk/english/council/social_services/annual_report.htm</a>

There are also a number of regional and local initiatives led by local authorities and the health board to address these priorities, as shown in the table below.

Issue	Lead organisation	What's being done	Regional Partnership Board role
Prevention and early intervention	<p>BCUHB</p> <p>Local authorities (including Flying Start and Families First programmes)</p> <p>Public Services Boards</p> <p>Third sector, voluntary and community organisations</p> <p>Housing associations and Registered Social Landlords</p>	<p>Improving health and reducing inequalities work-stream (includes ACEs)</p> <p>Findings from the population assessment have been shared with commissioners to inform the Families First programme. Regional commissioning learning set overseeing Families' First commissioning</p> <p>Integrated Care Fund (ICF)</p> <p>A wide variety of projects being delivered by partners – see Dewis for examples.</p>	<p>Lead for ICF: Six-monthly update reporting to the board. Exception reporting as required. Partnership oversight of the operational management of ICF</p>
Information, advice and assistance	<p>Dewis Cymru</p> <p>Third sector, voluntary and community organisations</p> <p>Housing associations and Registered Social Landlords</p>	<p>North Wales Information Network established, meets every two months. Chaired by Bethan Jones-Edwards, Regional Collaboration Team</p> <p>Dewis Cymru has been promoted as part of the population assessment.</p>	<p>The RPB receive information update reports from the network.</p>
	<p>Single Points of Access</p> <p>Family Information Service</p>	<p>In place in each local authority, many are MDTs, care coordination.</p>	<p>Aligns with RPB priorities and will be taken forward by partner agencies as part of their core business.</p>
Equality and human rights	<p>All public sector organisations and partners.</p>	<p>All services developed in response to the plan will require an Equalities Impact Assessment (EIA). Issues to consider and links to research evidence and consultation are included in the EIA and consultation report for this plan.</p>	<p>Regional Partnership Board to make sure an EIA is completed whenever appropriate on each of the integrated priorities developed under this plan.</p>

Issue	Lead organisation	What's being done	Regional Partnership Board role
Advocacy	<p>Local authorities</p> <p>BCUHB</p> <p>Third sector, voluntary and community organisations</p> <p>Housing associations and Registered Social Landlords</p>	<p>Link with Golden Thread Advocacy Programme (Age Cymru)</p> <p>Children's advocacy regional contract – Tros Gynnal</p>	<p>Aligns with RPB priorities and will be taken forward by partner agencies as part of their core business.</p> <p>NWASH and NWHoCs lead on regional advocacy projects.</p>
Transport and access to services	<p>Local authorities</p> <p>BCUHB</p> <p>Third sector, voluntary and community organisations</p>	<p>BCUHB pilot initiatives with Welsh Ambulance Services Trust and Community Transport Association</p>	<p>Need to discuss and agree with Public Services Boards where this priority should sit.</p>
Welsh language	<p>Mwy Na Geiriau / More than Words Forum and Workforce Board plus local plans (Morwena Edwards)</p> <p>Regional meeting social services and health, chair Meilyr Emrys BCUHB</p>	<p>Findings from the population assessment were shared with the lead agencies. They have been reflected in the <a href="#">workforce strategy</a>.</p>	<p>The RPB receive reports through the workforce work-stream.</p>
Promoting social enterprises, co-operatives, user led services and third sector	<p>Regional collaboration team (social value forum)</p> <p>Social enterprises, third sector, voluntary and community organisations</p>	<p>Promoting social value in social care services and commissioning.</p> <p>Developing a social value forum in each local authority area.</p>	<p>The RPB receive six monthly reports from the social value forum</p>
Citizen voice	<p>CVSC under contract to Regional Partnership Board.</p>	<p><a href="#">North Wales Citizen Panel</a></p>	<p>The RPB receive an annual report</p>
Poverty and inequality. Impact of welfare reform including homelessness (particularly for young people) and mental health	<p>Public Services Boards</p> <p>Local authority – housing strategy</p> <p>Third sector, voluntary and community organisations (welfare rights)</p> <p>Housing associations and Registered Social Landlords</p>	<p>PSB Well-being plans</p> <p>Welsh Government Tackling Poverty Action Plan</p>	<p>Aligns with RPB priorities and will be taken forward by partner agencies as part of their core business.</p>

Issue	Lead organisation	What's being done	Regional Partnership Board role
Safeguarding	Safeguarding Business Unit, Regional collaboration team All partners	Adults and Children Business plan. <a href="#">North Wales Safeguarding Children and Adult Boards</a>	Aligns with RPB priorities and will be taken forward by partner agencies as part of their core business. Delivery monitored by the statutory safeguarding board.
Improve quality of population and performance data	Welsh Government Local Government BCUHB Public Health Wales	Shared issues identified by the population assessment with Local Government Data Unit. New performance management framework introduced by Welsh Government	Aligns with RPB priorities and will be taken forward by partner agencies as part of their core business.
Challenges of delivering services in the current financial climate	All partners	Commitment to carrying out Equality Impact Assessments on service changes and mitigating any disproportionate impacts. Supporting the third/voluntary sector through improved commissioning practice.	The RPB recognise the additional pressures faced by all services.



## Part D: For more information

How to access the services available to support people with care and support needs and their carers in North Wales.

### Children and young people

#### Information, advice and assistance for children and families

For other support for families including childcare, contact Family Information Services.

Isle of Anglesey County Council: <http://www.anglesey.gov.uk/community/children-and-families/family-information-service/>

Gwynedd Council: [www.gwynedd-ni.org.uk](http://www.gwynedd-ni.org.uk)

Conwy County Borough Council: [www.conwy.gov.uk/children](http://www.conwy.gov.uk/children)

Denbighshire County Council:

<https://www.denbighshire.gov.uk/en/resident/community-and-living/childcare-and-parenting/childcare-and-parenting.aspx>

Flintshire County Council: <http://www.fisflintshire.co.uk/#>

Wrexham County Borough Council:

<http://www.wrexham.gov.uk/english/community/fis/index.htm>

#### Concerned about a child?

If you know a child who is at risk of abuse or is being abused, it's very important that you let the council or police know.

If the individual is in direct danger, call the Police immediately on 999. If not, phone Social Services as soon as possible to share your concerns.

Phone numbers for Social Services in North Wales are available here:

[www.northwalessafeguardingboard.wales](http://www.northwalessafeguardingboard.wales)

### Adults

#### Information, advice and assistance for adults and carers

For information about services in your area see Dewis Cymru [www.dewis.wales](http://www.dewis.wales)

Or contact the Single Point of Access (SPoA) at your local council for information about services available to support people's health and well-being.

Isle of Anglesey County Council: [www.anglesey.gov.uk/health-and-care/adult-services/](http://www.anglesey.gov.uk/health-and-care/adult-services/)

Gwynedd Council: <https://www.gwynedd.llyw.cymru/en/Residents/Health-and-social-care/Adults-and-older-people/Adultsandolderpeople.aspx>

Conwy County Borough Council: <http://www.conwy.gov.uk/en/Resident/Social-Care-and-Wellbeing/Contact-us/Single-Point-of-Access-SPOA/Conwy-Access-Team.aspx>

Denbighshire County Council: <https://www.denbighshire.gov.uk/en/resident/health-and-social-care/adults-and-older-people/single-point-of-access.aspx>

Flintshire County Council: <http://www.flintshire.gov.uk/en/Resident/Social-Services/Social-Services.aspx>

Wrexham County Borough Council:  
[http://www.wrexham.gov.uk/english/council/social\\_services/SocialServices.htm](http://www.wrexham.gov.uk/english/council/social_services/SocialServices.htm)

### **Concerned about an adult?**

If you know of an adult who is at risk of abuse or is being abused, it's very important that you let the council or the police know.

If the individual is in direct danger, call the Police immediately on 999. If not, phone Social Services as soon as possible to share your concerns.

Phone numbers for Social Services in North Wales are available here:  
[www.northwalessafeguardingboard.wales](http://www.northwalessafeguardingboard.wales)